

HUANGHE WHIRLWIND

DIAMOND SAW BLADES AND CORE BITS



HENAN HUANGHE WHIRLWIND CO.,LTD.

Add:Renmin Road,Changge City Henan Province,China

Tel:86-371-69102502-822

Fax:86-371-69102501

E-mail:egri@huanghewhirlwind.com

Http://www.hhxf.com



HENAN HUANGHE WHIRLWIND CO.,LTD.

HUANGHE WHIRLWIND

COMPANY BRIEFING

Henan Huanghe Whirlwind Co.,Ltd was founded by five major shareholders including HenanHuanghe Enterprises Group,Osaka Diamond Co.,Ltd.(Japan),Zhengzhou Research Institute for Abrasives and Grinding,etc.As one of the large enterprises in China,the company was listed on Shanghai Stock Exchange on November26,1998,and now has developed into a diversified,high-tech enterprise undertaking scientific research,production trade and finance.

Huanghe Whirlwind is a key high-tech enterprise under “State Torch Program” ,and owns National Enterprise Technology Center,Postdoctoral Workstation and Shanghai R&D Center,We specialized in six industrial fields and professionally supply over 146 kind products verified in over 400 specifications including synthetic diamond,CBN,coated diamond,diamond micron powder,diamond tools,UDS series presser,construction machinery,special vehicle,automatic control system,etc,As the leading company in synthetic diamond and diamond tools in China,we were awarded 2 National Gold Prizes and 128 Scientific Promotion Prizes and we have already got 76 patents in recent years.Our products have been sharing high reputation in global market such as Japan,America,Europe and South-east Asia,etc.

“Best quality,Competitive price,Shortest delivery,Satisfactory service” are our management target.

“Trustworthy,Faithful,Cooperative,Harmonious” are our management principle.

“United,Creative,Practical,Contributive” are our management spirit.

We will keep open,and your any kind of joining hand with us is welcomed and appreciated.



CONTENTS

type of equipment.....	03
1.general purpose blade.....	04-06
2.hand held saw blade.....	07-08
3.masonry blade.....	09
4.walk behind saw blade.....	10
5.flat saw blade.....	11-12
6.stone blade.....	13-14
7.tile blade.....	14-15
8.tuck point blade and wall saw blade.....	16
9.grinding wheel	17
10.diamond core bits and wire.....	18
11.new blade.....	19
12.when ordering.....	20
13.safety and working instructions.....	20
14.operating speed.....	21

Type of equipment

type of equipment

Masonry saw		Angle grinder	
Core Drilling machine		Circular saw	
Hand drill		Stone saw	
Tuck pointer		Tile saw	
Wall saw		Flat saw	
Laser welded		Grooving saw	
Brazed		Walk behind saw	
Dry		Floor grinder	
Wet		Hand-held power saw	

GENERAL PURPOSE BLADE

LASER WELDED SEGMENTED BLADES



item NO.	diameter	width	height	bore
	inch	mm	mm	mm
JC105	4"	2.2	7/10	20
JC115	4.5"	2.2	7/10	20
JC125	5"	2.2	7/10	20
JC150	6"	2.2	7/10	20
JC180	7"	2.2	7/10	20
JC200	8"	2.2	7/10	20
JC230	9"	2.6	7/10	20
JC250	10"	2.6	7/10	22.2
JC300	12"	3.0	7/10	25.4
JC350	14"	3.2	7/10	25.4

Features: General purpose cutting with fast speed and long life.High performance/price ratio.

Applications: Concrete,brick,block,masonry,and stone.

Machinery: Masonry saw,handheld saw,angle grinder.

SINTERED CONTINUOUS RIM BLADES



item NO.	diameter	width	height	bore
	inch	mm	mm	mm
SR105	4"	1.8	7/10	20
SR115	4.5"	1.8	7/10	20
SR125	5"	1.8	7/10	20
SR150	6"	2.2	7/10	20
SR180	7"	2.2	7/10	20
SR200	8"	2.4	7/10	20
SR230	9"	2.4	7/10	20

Features: Best choice for DIY market,cut smoothly.

Applications: masonry,stone.

GENERAL PURPOSE BLADE



SINTERED CONTINUOUS TURBO I BLADES

item NO.	diameter	width	height	bore
	inch	mm	mm	mm
HVI105	4"	2.2	7	20
HVI115	4.5"	2.2	7	20

Features: The turbo segment improves cutting efficiency.

Applications: Hard concrete,hard brick,granite,masonry.

SINTERED CONTINUOUS TURBO II BLADES

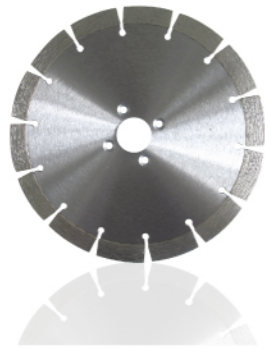


item NO.	diameter	width	height	bore
	inch	mm	mm	mm
HV105	4"	2.2	7	20
HV115	4.5"	2.2	7	20
HV125	5"	2.2	7	20
HV150	6"	2.2	7	20
HV180	7"	2.4	7	20
HV200	8"	2.4	7	20
HV230	9"	2.6	7	20

Features: Wide turbo teeth offer fast and powerful cutting.Hot pressed sintering process gives the blade ideal long life.

Applications: Concrete,brick,block,masonry,stone.

GENERAL PURPOSE BLADE

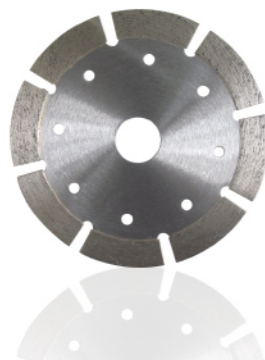


SINTERED SEGMENTED BLADES

item NO.	diameter	width	height	bore
	inch	mm	mm	mm
SSI105	4"	1.8	7	20
SSI115	4.5"	1.8	10	22.2
SSI125	5"	1.8	10	22.2
SSI150	6"	2.2	7/10	25.4
SSI180	7"	2.2	7/10	25.4
SSI200	8"	2.4	7/10	25.4
SSI230	9"	2.6	7/10	25.4
SSI250	10"	2.6	7/10	25.4

Features: Multi application blade suitable for general purpose.

Applications: Masonry,brick,block,concrete,stone.



SINTERED SEGMENTED U SLOT BLADES

item NO.	diameter	width	height	bore
	inch	mm	mm	mm
SSU105	4"	1.8	7	20
SSU115	4.5"	1.8	10	20

Features: Multi-application blade suitable for any general purpose.

Applications: Masonry,brick,block,concrete.

HAND HELD SAW BLADE



HC BLADES

item NO.	diameter	width	height	bore
	inch	mm	mm	mm
HC-10	10"	2.9	7/10	25.4
HC-12	12"	2.9	7/10	25.4
HC-14	14"	2.9	7/10	25.4

Features: Holes in the core help cooling and fast cutting. Suitable bond, supreme diamond provide fast cutting.

Applications: Concrete,brick,block,masonry,and stone.

Machinery: Hand-held power saw and masonry saw.



HW BLADES

item NO.	diameter	width	height	bore
	inch	mm	mm	mm
HW-10	10"	3.1	7	25.4
HW-12	12"	3.1	7	25.4/27
HW-14	14"	3.1	7	25.4/27
HW-16	16"	3.1	7	25.4/27
HW-18	18"	3.1	7	25.4/27

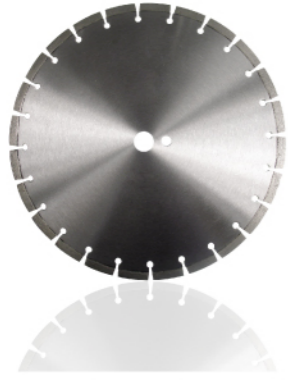
Features: Laser welding technology provides safe connection between segments and core. Experienced tension processing makes the thinner blade more hard. slant segments are used to protect blade from undercutting. Suitable bond, supreme diamond provide fast cutting.

Applications: Reinforced concrete,green concrete,abrasive materials,masonry,stone.

Machinery: High speed hand-held power saw.

HAND HELD SAW BLADE

HD BLADES



item NO.	diameter	width	height	bore
	inch	mm	mm	mm
HD-4	4"	2.1	7	20
HD-5	5"	2.1	7	22
HD-6	6"	2.1	7	22
HD-7	7"	2.1	7	25.4
HD-8	8"	2.2	7	25.4
HD-9	9"	2.8	7	25.4
HD-10	10"	2.9	7	25.4/30.5
HD-12	12"	2.9	7	25.4/30.5
HD-14	14"	2.9	7	30.5

Features:

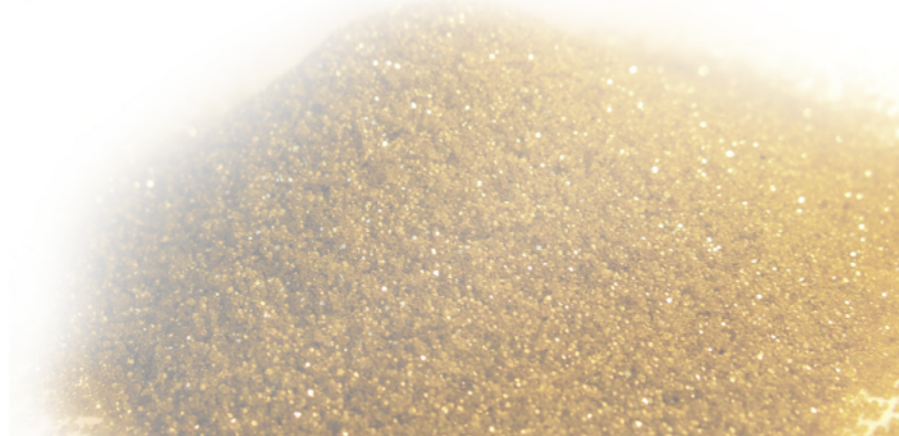
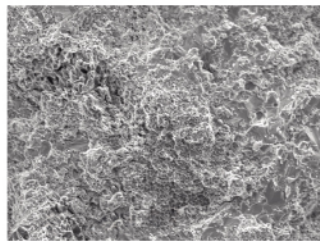
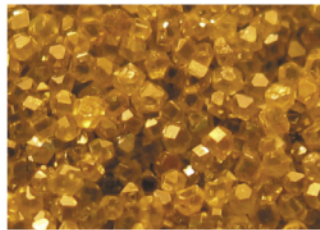
Laser welding technology provides safe connection between segments and core. Experienced tension processing makes the thinner blade more hard. Suitable bond, supreme diamond provide fast cutting.

Applications:

Reinforced concrete, green concrete, abrasive materials, masonry, stone.

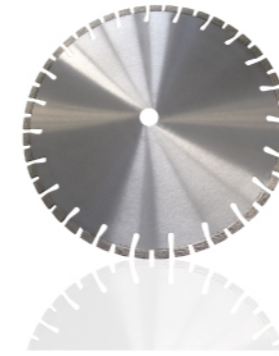
Machinery:

High speed hand-held power saw.



MASONRY BLADE

LS BLADES



item NO.	diameter	width	height	bore
	inch	mm	mm	mm
LS-10	10"	2.6	10	25.4
LS-12	12"	3.0	10	25.4
LS-14	14"	3.4	10	25.4
LS-16	16"	3.6	10	25.4
LS-18	18"	3.6	10	25.4
LS-20	20"	4.0	10	25.4

Features:

The special water channels make easy removal of debris and fast speed.

Applications:

Hard brick, concrete, masonry, block.

Machinery:

Masonry saw, hand held saw.

LT BLADES



item NO.	diameter	width	height	bore
	inch	mm	mm	mm
LT-10	10"	2.6	10	25.4
LT-12	12"	3.0	10	25.4
LT-14	14"	3.4	10	25.4
LT-16	16"	3.6	10	25.4
LT-18	18"	3.6	10	25.4
LT-20	20"	4.0	10	25.4

Features:

Regarding the special designed segment structure and slanting water channel, its cooling and chipflow capacity have greatly improved.

Applications:

Reinforced concrete, brick, masonry, block.

Machinery:

Masonry saw and floor saw.

WALK BEHIND SAW BLADE

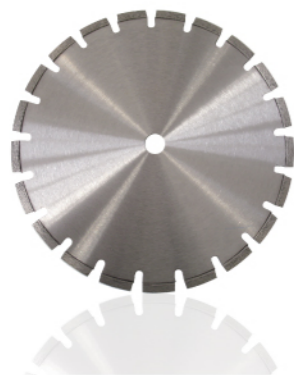


LWBS BLADES



item NO.	diameter	width	height	bore
	inch	mm	mm	mm
LWBS-12	12"	3.0	10	25.4
LWBS-14	14"	3.4	10	25.4
LWBS-16	16"	3.6	10	25.4
LWBS-18	18"	3.6	10	25.4
LWBS-20	20"	4.0	10	25.4
LWBS-24	24"	4.8	10	25.4
LWBS-30	30"	5.0	10	25.4
LWBS-32	32"	5.5	10	25.4

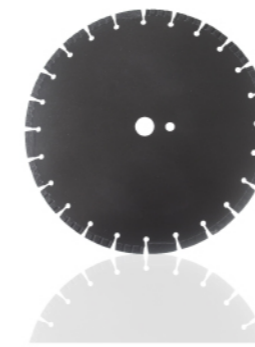
LWBU BLADES



item NO.	diameter	width	height	bore
	inch	mm	mm	mm
LWBU-12	12"	3.0	10	25.4
LWBU-14	14"	3.4	10	25.4
LWBU-16	16"	3.6	10	25.4
LWBU-18	18"	3.6	10	25.4
LWBU-20	20"	4.0	10	25.4
LWBU-24	24"	4.8	10	25.4
LWBU-30	30"	5.0	10	25.4
LWBU-32	32"	5.5	10	25.4

- Features:** The blades give excellent cutting speed and long life while used on walk behind saws up to 20 hp. slant segments are used to protect blade from undercutting.
- Applications:** Concrete, green concrete, asphalt.
- Machinery:** Up to 20hp walkbehind saw, masonry saw, and hand held saw.

FLAT SAW BLADE



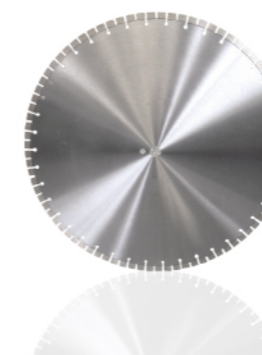
ASPHALT BLADES



item NO.	diameter	width	height	bore
	inch	mm	mm	mm
LQ-14	14"	3.4	10	25.4
LQ-16	16"	3.6	10	25.4
LQ-18	18"	3.6	10	25.4
LQ-20	20"	4.0	10	25.4

- Features:** The blades are designed for asphalt and green concrete with suitable bond and structure. Slant segments protect the blade from undercutting.
- Applications:** Green concrete, asphalt, abrasive materials.
- Machinery:** Flat saw machines with power more than 35 hp.

CURED CONCRETE BLADES



item NO.	diameter	width	height	bore
	inch	mm	mm	mm
LCC-14	14"	3.4	10	25.4
LCC-16	16"	3.6	10	25.4
LCC-18	18"	3.6	10	25.4
LCC-20	20"	4.0	10	25.4
LCC-24	24"	4.8	10	25.4
LCC-30	30"	5.0	10	25.4
LCC-32	32"	5.5	10	25.4

- Features:** The special design for professional cutting cured concrete with various aggregates and heavy reinforcement.
- Applications:** Cured concrete.
- Machinery:** Flat saw machines with power more than 35 hp.

FLAT SAW BLADE



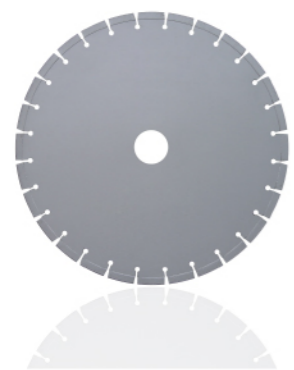
GREEN CONCRETE BLADES

item NO.	diameter	width	height	bore
	inch	mm	mm	mm
LGC-14	14"	3.4	10	25.4
LGC-16	16"	3.6	10	25.4
LGC-18	18"	3.6	10	25.4
LGC-20	20"	4.0	10	25.4
LGC-24	24"	4.8	10	25.4
LGC-30	30"	5.0	10	25.4
LGC-32	32"	5.5	10	25.4

Features: These blades are designed for green concrete with suitable bond and structure.

Applications: Green concrete, asphalt, abrasive materials.

Machinery: Flat saw machines



REINFORCED CONCRETE BLADES

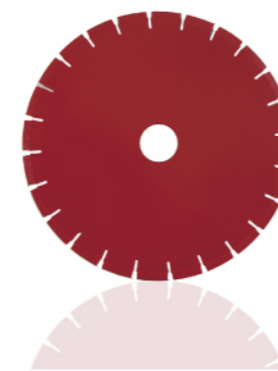
item NO.	diameter	width	height	bore
	inch	mm	mm	mm
LRC-14	14"	3.4	10	25.4
LRC-16	16"	3.6	10	25.4
LRC-18	18"	3.6	10	25.4
LRC-20	20"	4.0	10	25.4
LRC-24	24"	4.8	10	25.4
LRC-30	30"	5.0	10	25.4
LRC-32	32"	5.5	10	25.4

Features: Ideal bonds are designed or professional cutting cured concrete with various aggregates and heavy reinforcement.

Applications: Reinforced concrete.

Machinery: Flat saw machines with power more than 35 hp.

STONE BLADE



BRAZEN GRANITE BLADES

item NO.	diameter	width	height	bore
	inch	mm	mm	mm
GH-12	12"	3.0	10	50/60
GH-14	14"	3.2	10	50/60
GH-16	16"	3.6	10	50/60
GH-18	18"	3.6	10	50/60
GH-20	20"	4.0	10	50/60
GH-24	24"	4.8	10	50/60
GH-28	28"	5.0	10	50/60
GH-32	32"	6.0	10	50/60

Features: Segmented blade for wet cutting granite.

Applications: Granite.

Machinery: Bridge saw, stone saw.



BRAZEN MARBLE BLADES

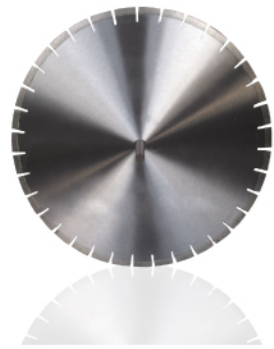
item NO.	diameter	width	height	bore
	inch	mm	mm	mm
MH-12	12"	3.0	10	50/60
MH-14	14"	3.2	10	50/60
MH-16	16"	3.6	10	50/60
MH-18	18"	3.6	10	50/60
MH-20	20"	4.0	10	50/60
MH-24	24"	4.8	10	50/60
MH-28	28"	5.0	10	50/60

Features: Brazen segmented blade with narrow U gullets for chip free and smooth cutting. The seams between segments release stress in the blade to avoid wobbling during cutting.

Applications: Marble

Machinery: Bridge saw, stone saw.

STONE BLADE



BRAZED SILENT GRANITE BLADES

item NO.	diameter	width	height	bore
	inch	mm	mm	mm
SGH-12	12"	3.4	10	50/60
SGH-14	14"	3.4	10	50/60
SGH-16	16"	3.6	10	50/60
SGH-18	18"	4.0	10	50/60
SGH-20	20"	4.0	10	50/60
SGH-24	24"	4.8	10	50/60

- Features:** The special sandwich core reduce noise while cutting.
- Applications:** Stone, masonry, brick, block concrete
- Machinery:** Masonry saw, stone saw.

TILE BLADE

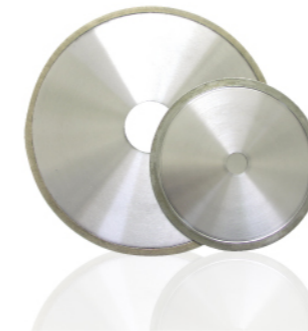


SUPER THIN TURBO TILE BLADES

item NO.	diameter	width	height	bore
	inch	mm	mm	mm
STT105	4"	1.4	8	20
STT115	4.5"	1.4	8	20

- Features:** Super thin turbo rim give a dramatic improvement on cutting speed for dry cutting.
- Applications:** All kinds of ceramic tiles and porcelain.
- Machinery:** Angle grinder.

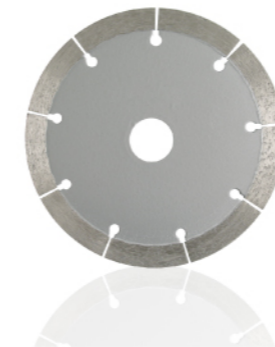
TILE BLADE



WB BLADES

item NO.	diameter	width	height	bore
	inch	mm	mm	mm
WB105	4"	1.6	7	20
WB115	4.5"	1.6	7	20
WB125	5"	1.8	7	20
WB150	6"	1.8	7	20
WB180	7"	2.2	7	50

- Features:** Supreme diamond and precise tolerance control provide fast cutting with minimum chipping. Group blades available.
- Applications:** Ceramic tiles, porcefaïn, and marble.
- Machinery:** Tile saw multi-blade tile saw.



SWB BLADES

item NO.	diameter	width	height	bore
	inch	mm	mm	mm
SWB125	5"	1.8	12	20
SWB150	6"	1.8	10	60
SWB180	7"	2.2	10	60

- Features:** Hot pressed sintering blade with thinner segment provides fast, accurate cutting.
- Applications:** Tile and porcelain.
- Machinery:** Tile saw, multi-blade tile saw.

TUCK POINT BLADE



BRAZED TUCK POINT BLADES   

item NO.	diameter	width	height	bore
	inch	mm	mm	mm
BTK105	4"	6.4	10	22.23
BTK115	4.5"	6.4	10	22.23
BTK125	5"	6.4	10	22.23

- Features:** Designed for repairing grout, cleaning and routing cement mortar joints.
- Applications:** Green concrete, joints of brick or block, masonry.
- Machinery:** Angle grinder, tuck pointer.

WALL SAW BLADE



WALL SAW BLADES  

item NO.	diameter	width	height	bore
	inch	mm	mm	mm
LTWS-24	24"	4.8	12	35
LTWS-30	30"	5.2	12	35

- Features:** Small segments provide fast and stable cutting.
- Applications:** Concrete wall, brick wall.
- Machinery:** Hydraulic or electric powered wall saw.

GRINDING WHEEL



SINGLE ROW CUP WHEEL  

item NO.	diameter	width	height	bore
	inch	mm	mm	mm
BSCW-4	4"	5	8	22.23
BSCW-4.5	4.5"	5	8	22.23
BSCW-5	5"	5	8	22.23
BSCW-6	6"	5	8	22.23
BSCW-7	7"	5	8	22.23
BSCW-9	9"	5	8	22.23



DOUBLE ROW CUP WHEEL  

item NO.	diameter	width	height	bore
	inch	mm	mm	mm
BBCW-4	4"	5	8	22.23
BBCW-4.5	4.5"	5	8	22.23
BBCW-5	5"	5	8	22.23
BBCW-6	6"	5	8	22.23
BBCW-7	7"	5	8	22.23
BBCW-9	9"	5	8	22.23

- Features:** Segments are brazed on the wheel, Excellent performance is suitable for concrete surface grind. Single row for fast roughing and double row for finishing.
- Applications:** Concrete.

NEW PRODUCTS  



DIAMOND CORE BITS AND WIRE

DIAMOND CORE BITS FOR CONCRETE 



Specification(outer diameter)	φ20	φ25	φ30	φ32	φ37	φ40	φ44	φ46	φ51	φ56	φ63	φ65	φ71
Effective length	300			400			500						
Specification(outer diameter)	φ75	φ80	φ91	φ101	φ116	φ120	φ130	φ146	φ155	φ160	φ175	φ180	φ200

DIAMOND WIRE

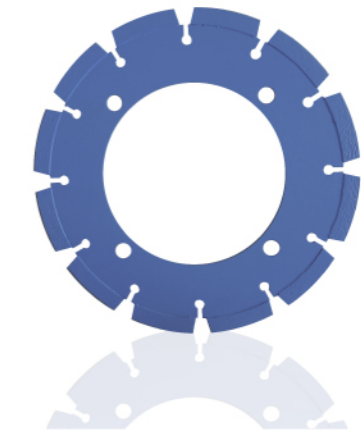


Material	Specification mm	Beads m	mode of fixation	Material type	Liner speed m/s	Sawing speed m ² /h	Lifetime m ² /m
Granite	φ11	38	Plastic	Medium hard	22-25	2-4	8-12
Marble	φ8	32	Plastic	Medium hard	32-36	7-9	32-45
Reinforced concrete	φ10	38	Plastic	Medium hard	20-22	2-3.5	1-2.5

NEW BLADE



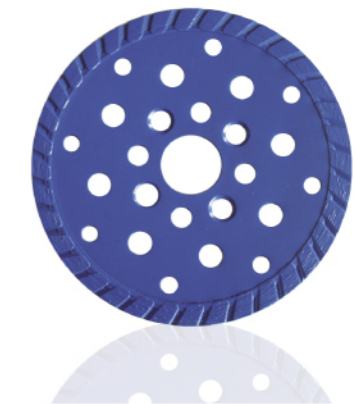
14 inch Ring saw blade



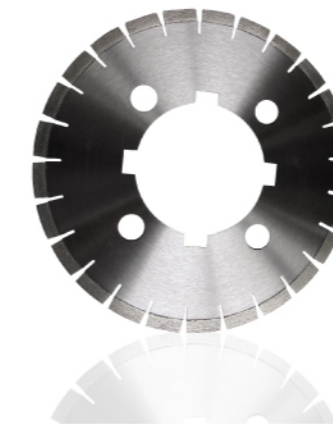
7 inch Carbide cutting blade



5 inch Asphalt blade



4.5 inch Silent core turbo blade



15 inch Crack chaser concrete blade



WHEN ORDERING

When placing an order, the following information is required.

- ▶ Diameter and specifications of the product. We can custom manufacture to your specifications.
- ▶ Arbor Hole Size. Pin hole where necessary and CTC between Arbor Hole and Pin Hole.
- ▶ Material to be cut. (GP, natural stone, masonry, concrete, asphalt)
- ▶ Hardness of the material. (Hard, medium or soft)
- ▶ Type of machine. (flat saws, masonry saws, hand-held saws)
- ▶ Wet or dry cutting. Commonly right angle grinders, hand held high speed saws are used dry. Masonry saws, floor saws are generally used wet, however, some applications are used dry.
 - ▶ Spindle speed (rpm)
 - ▶ Motor power (HP or KW)

SAFETY AND WORKING INSTRUCTIONS

1. Ensure flange, spindle and the blade are clean and free from damage before mounting blade.
2. Ensure the blade is mounted on the correct diameter shaft with the arrow in the proper direction and the blade flanges are secured with a wrench.
3. Do not exceed maximum operating speed recommended by the blade manufacturer.
4. Avoid overheating. Allow the diamond blade to cool by turning it freely in the air every few minutes.
5. Use the correct diamond blade specification and proper saw for the material to be cut.
6. Always wear proper safety equipment as safety glasses, protective clothing/hearing, safety footwear and respiratory equipment.

OPERATING SPEED

diameter	recommended	maximum
mm	RPM	RPM
55	16778	27798
80	11464	19108
89	10305	17176
105	9072	15000
110	8338	13897
115	8063	13300
125	7257	12000
150	6048	10185
180	5148	8730
200	4536	7640
230	4032	6790
250	3629	6115
300	3024	5095
350	2592	4365
400	2268	3820
450	2016	3395
500	1814	3055
600	1512	2550
700	1396	2350
800	1210	2040
900	1008	1700
1000	864	1455